



www.lifesazoo.tv



Cuppa Coffee Studios
presents...



Life's a zoo.tv

...a new reality series gone wild!






starring...
Chi Chi: The lovable optimist



Morreski: The old drunk



Dr D: The wannabe gangsta

A clay sculpture of two characters. In the foreground is a large, pink pig with a surprised expression, wide eyes, and a slightly open mouth. It has a large, rounded body and is holding a dark, cylindrical object in its right hand. Behind the pig is a woman with blonde hair, wearing a yellow top, with her mouth wide open in a scream or shout. The sculpture is set against a dark background with some vertical lines.

Jake: The All-Canadian Guy



Copyright

Ray: The party dude



Rico: The gay cliché



Claude: The anti host



Minou: The glamorous bitch

and...

Bobbie: The ambitious new host























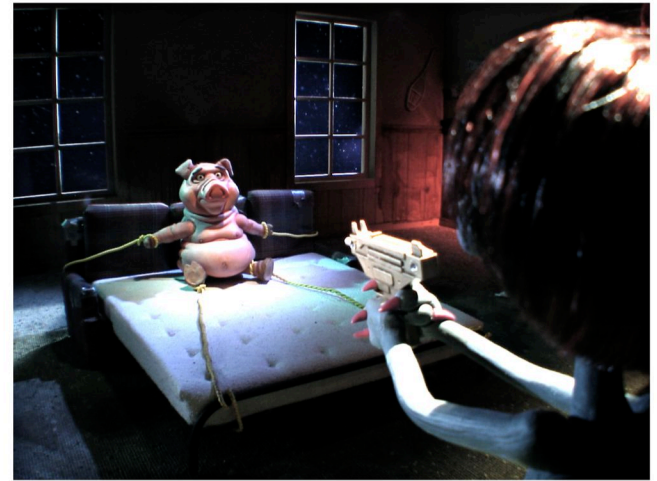
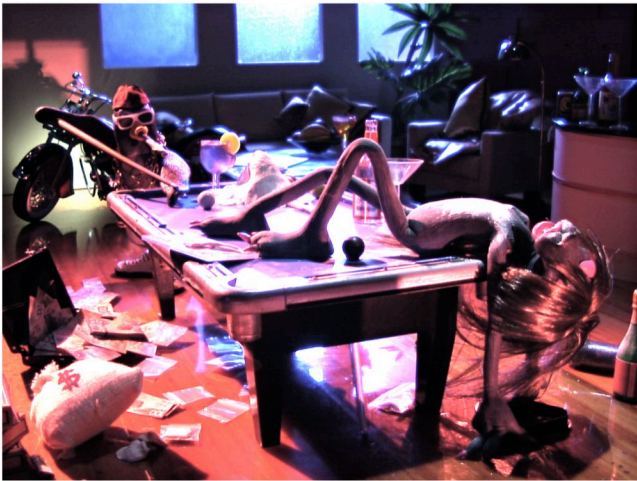
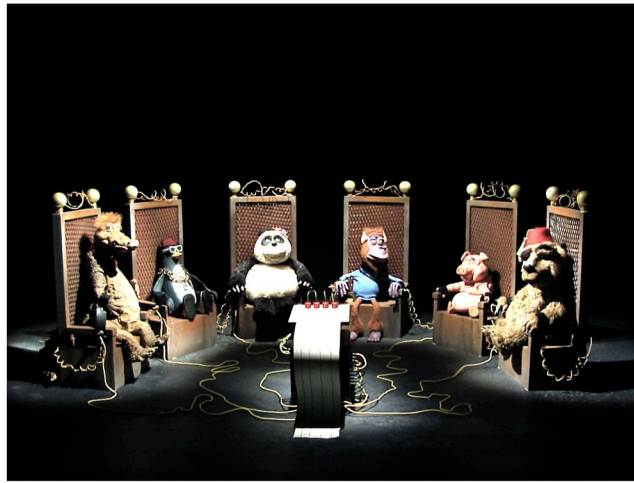


























Life's a Zoo.tv

70 sets, 240 puppets, 160 artists...

...and magic.








Life's a Zoo - EP118

Episode Name: Chubby Chasers

Sc001	LAZEP118_TIMELAPSE.JPG	Sc002	LAZ118_0002.JPG	Sc003	LAZ118_0003.JPG
					
					
Dialogue		Dialogue		Dialogue	
Jake		JAKE		JAKE	
Okay, so		Chi Chi will smell the roast turkey		HERE...	
Action		Action		Action	
		INT. RAY'S ATTIC - MORNING (Ray has gone Rambo style) Ray's room looks like a war room. The walls are covered in maps of the mansion, pictures of Chi Chi, and Jake's blow-up doll with a crude, hand-drawn Chi Chi mask, and a target on her chest.		INT. RAY'S ATTIC - MORNING Jake and Ray are looking over a large hand-drawn map of the mansion, with a pointer. They're acting like army generals. Ray is applying black war paint under his eyes.	
inFrame 300	2.63 seconds 79 frames	inFrame 379	1.63 seconds 49 frames	inFrame 428	3.10 seconds 93 frames

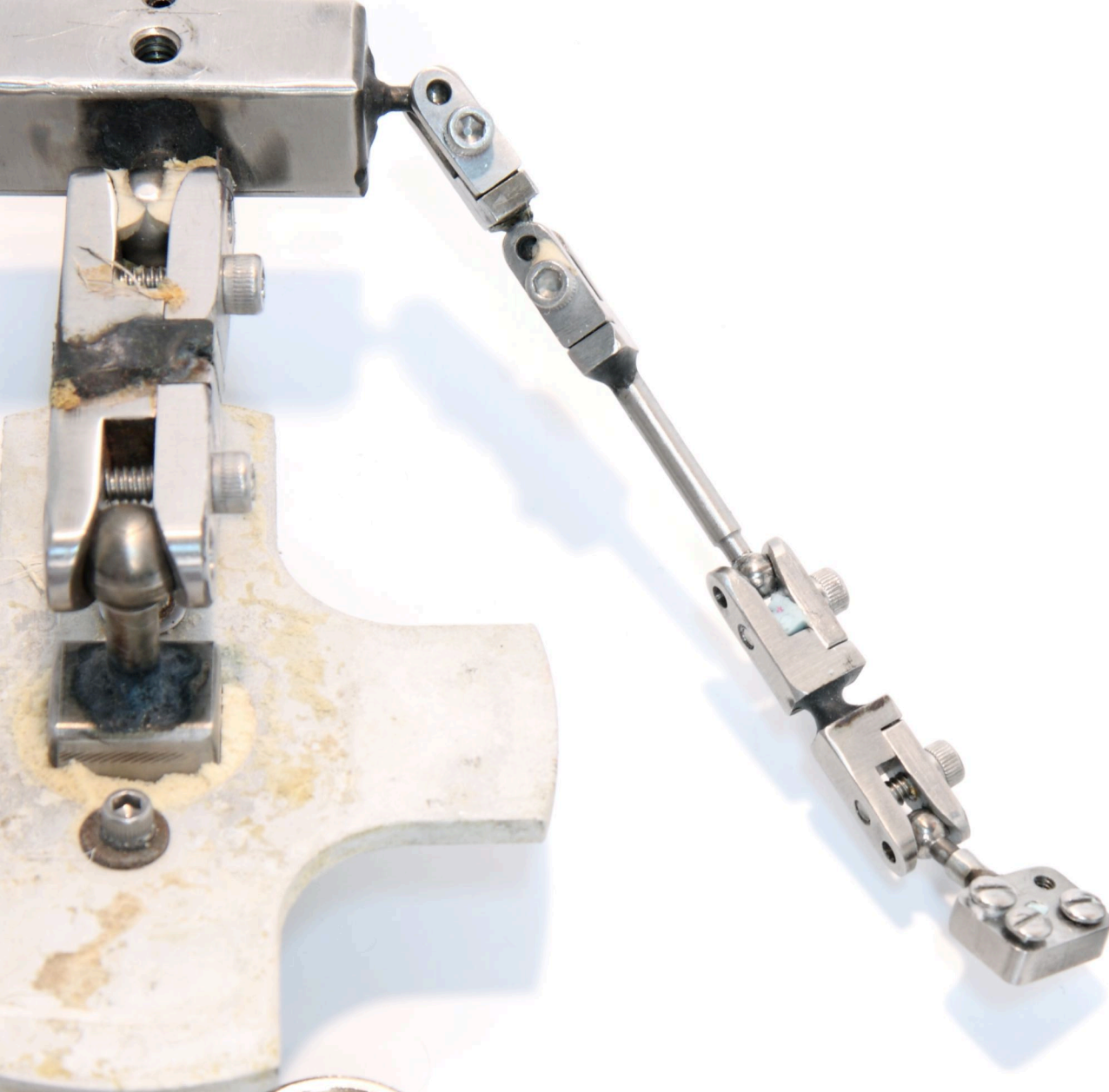




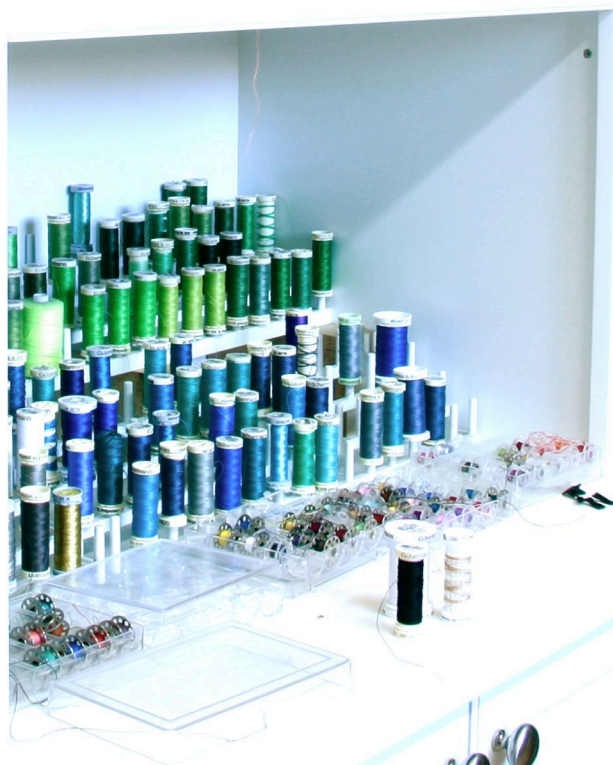
























BOARDROOMS

Coffee Shop
OPEN

LE CAFE

EXIT

FRIDAY FEB 9
10:30PM
CELEBRITY
DEATHMATCH